

the mia

3 BED | 2 BATH | 3 or 4 CAR | 1778 SQFT

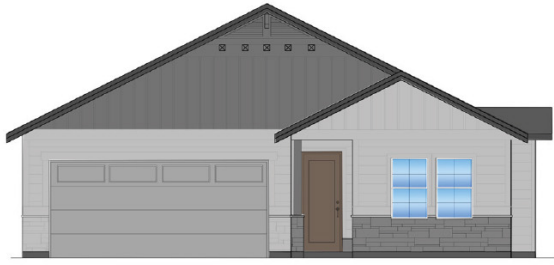
Lot/Block: 8/1, 11/1, 17/1, 2/2, 6/2, 10/2, 32/2, 37/2, 40/2, 42/2, 14/3, 25/3



IRON OAK
HOMES

This adorable home is a buyer favorite in Crescent Lake. Small but mighty, Iron Oak's floor single-level plan, the "Mia" offers an efficient layout with amazing design features such as an oversized garage, covered patio, 3 bedrooms, 2 bathrooms, and open concept living space. With large bright windows and tall ceilings, this home feel spacious and bright. The kitchen offers luxury appliances, large center island, gas built-in range and separate built-in oven & microwave. With granite or quartz throughout the home, custom cabinetry with soft close and to-the-ceiling in the kitchen and designer lighting & plumbing fixtures, this home has all the amenities to suite even the pickiest buyers. Come see this home for yourself by visiting Crescent Lake, Middleton's newest water front community. Model homes are open on Thursday – Sunday from noon – 5pm.

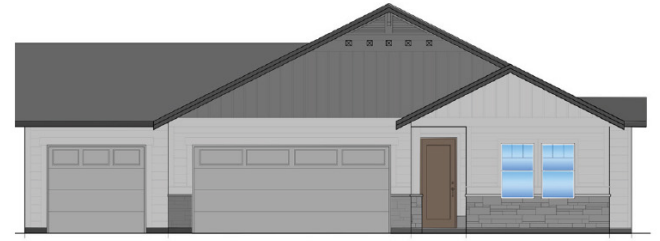




ELEVATION A



ELEVATION B



ELEVATION C



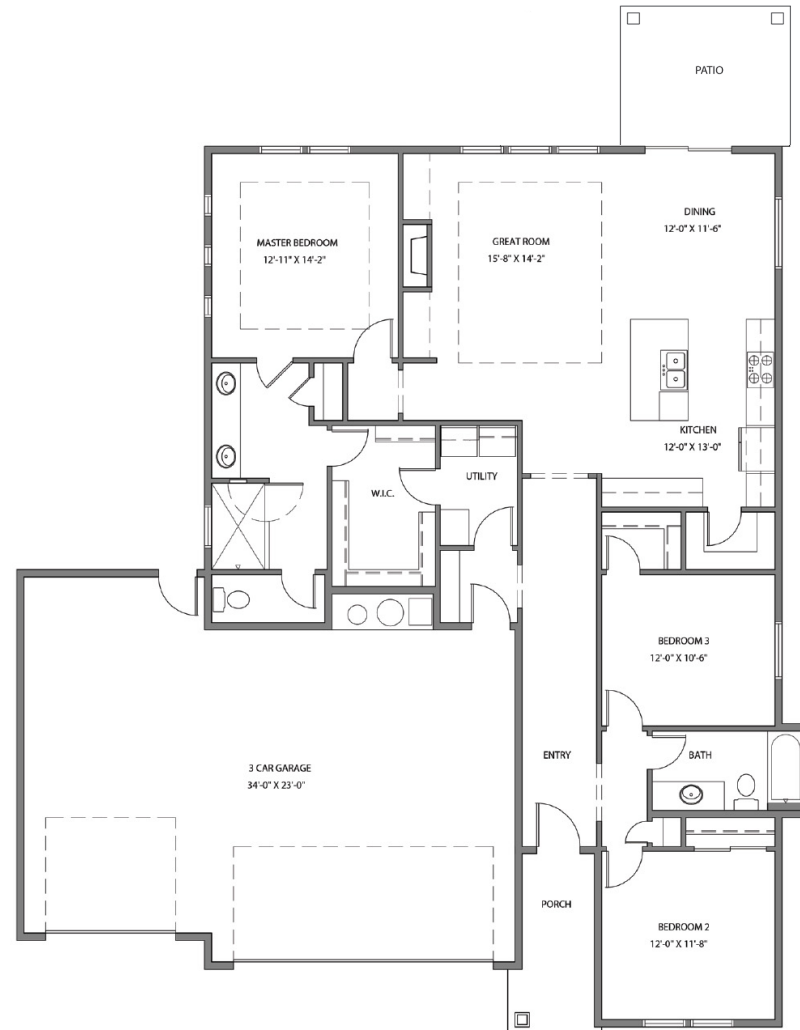
IRON OAK
HOMES

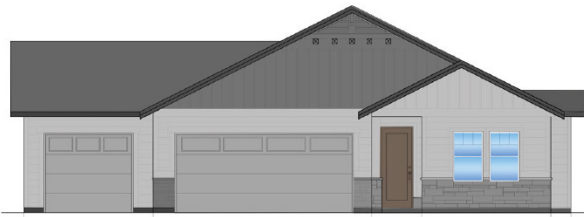
THE MIA

CRESCENT LAKE SUBDIVISION

3 BED | 2 BATH | 3 CAR | 1778 SQFT

*NOT FINAL - SUBJECT TO CHANGE





ELEVATION A



ELEVATION B



ELEVATION C



IRON OAK
HOMES

THE MIA

CRESCENT LAKE SUBDIVISION

3 BED | 2 BATH | 4 CAR | 1778 SQFT

*NOT FINAL - SUBJECT TO CHANGE

