



the holland rv

3 BED | 2 BATH | 2 CAR + RV or 3 CAR | 2054 SQFT

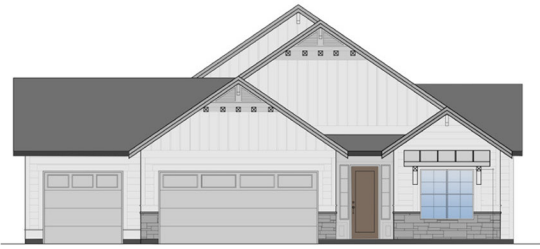
Lot/Block: 3/1, 4/1, 7/1, 9/1, 25/1, 21/2, 30/2, 33/2, 35/2, 38/2, 41/2, 43/2, 16/3, 19/3, 21/3, 26/3, 30/3, 33/3, 37/3



IRON OAK
— HOMES —

Proudly presenting Iron Oak's single-level "Holland" floorplan in Middleton's newest waterfront community: Crescent Lake. This home comes with a 3 car garage or a 2 car + 36' deep boat bay with a 10'x12' door for all your toy storage. Many versions of this home offer an additional roll-up door in back of the garage. This home offers TWO covered patios – one off the dining room for all to enjoy and a private patio off the Master Suite creating an intimate outdoor space. Iron Oak builds all their homes with beautiful, modern finishes including a kitchen adorned with upgraded granite or quartz countertops and design details throughout the home such as accent walls, ship lap, ceiling details & more! There is so much aesthetic beauty to uncover. The chefs kitchen offers a built-in gas range, walk-in pantry with appliance counter & outlets, soft close cabinets to the ceiling & oversized drawers with trash can pull-out. There is so much to see and experience in this new community – visit soon and see for yourself!

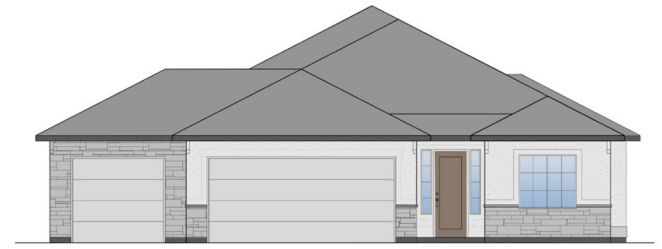




ELEVATION A



ELEVATION B



ELEVATION C



IRON OAK
HOMES

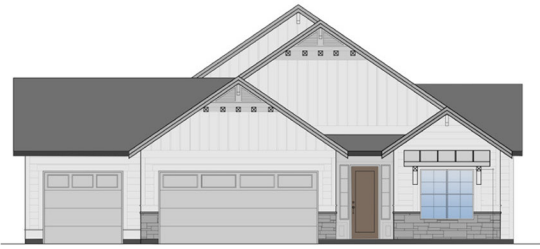
THE HOLLAND

CRESCENT LAKE SUBDIVISION

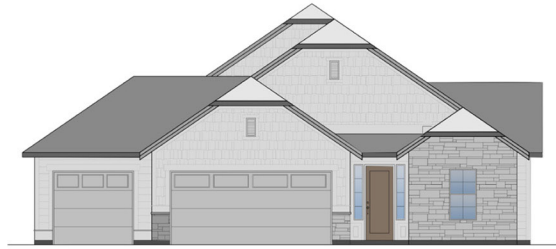
3 BED | 2 BATH | 2 CAR + RV | 2054 SQFT

*NOT FINAL - SUBJECT TO CHANGE

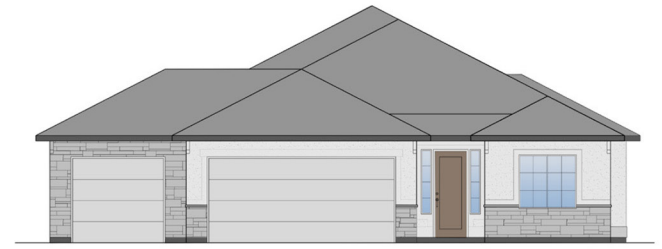




ELEVATION A



ELEVATION B



ELEVATION C



IRON OAK
HOMES

THE HOLLAND

CRESCENT LAKE SUBDIVISION

3 BED | 2 BATH | 3 CAR | 2054 SQFT

*NOT FINAL - SUBJECT TO CHANGE

