



the mason

3 BED | 2.5 BATH | 2 CAR, 2.5 CAR, & 3 CAR | 2182 SQFT

Lot/Block: 1/1, 5/1, 10/1, 16/1, 22/1, 26/1, 12/2, 16/2, 29/2, 34/2, 36/2, 39/2, 12/3, 22/3, 28/3



IRON OAK
HOMES

Welcome to Iron Oak's beautiful home, the "Mason" located in Middleton's newest waterfront community: Crescent Lake. This split bedroom floor plan is complete with 4 bedrooms. The 4th bedroom is perfect for an at-home office or flex space as well. With options for a 2 car, oversized 2.5 car or 3 car garage, there is plenty of storage potential! Enjoy a quiet, peaceful evening on the covered patio with pre-wiring for surround sound. You'll love open concept kitchen and great room living space with large windows and 10' ceilings. The beautiful master suite boasts a tile walk-in shower and separate soaker tub. Crescent Lake comes fully landscaped (front/back) with full backyard fencing. Stop by to see this home and many more under construction! Our model homes are open Thursday-Sunday from 12-5pm. Come take a tour and let us help you buy in Crescent Lake!





ELEVATION OPTION A



ELEVATION OPTION B



ELEVATION OPTION C



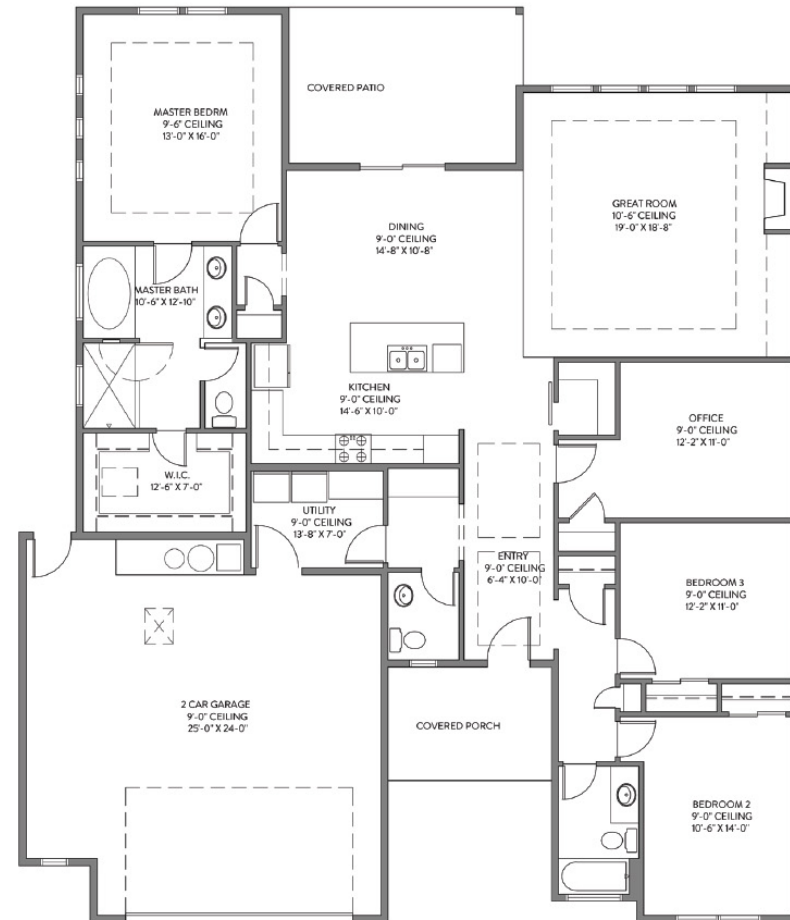
IRON OAK
HOMES

THE MASON

CRESCENT LAKE SUBDIVISION

3 BED | 2.5 BATH | 2 CAR | 2232 SQFT

*NOT FINAL - SUBJECT TO CHANGE





ELEVATION OPTION A



ELEVATION OPTION B



ELEVATION OPTION C



IRON OAK
HOMES

THE MASON

CRESCENT LAKE SUBDIVISION

3 BED + OFFICE | 2.5 BATH | 2 CAR EXTENDED | 2183 SQFT

*NOT FINAL - SUBJECT TO CHANGE





ELEVATION OPTION A



ELEVATION OPTION B



ELEVATION OPTION C



IRON OAK
HOMES

THE MASON

CRESCENT LAKE SUBDIVISION

3 BED | 2.5 BATH | 3 CAR | 2232 SQFT

*NOT FINAL - SUBJECT TO CHANGE

