



## the hudson II

3 BED + BONUS | 2.5 BATH | 3 CAR | 2590 SQFT

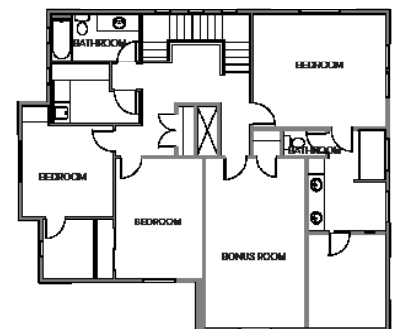
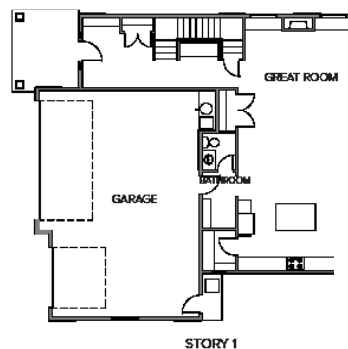
Lot/Block: 5/2, 13/2, 26/2

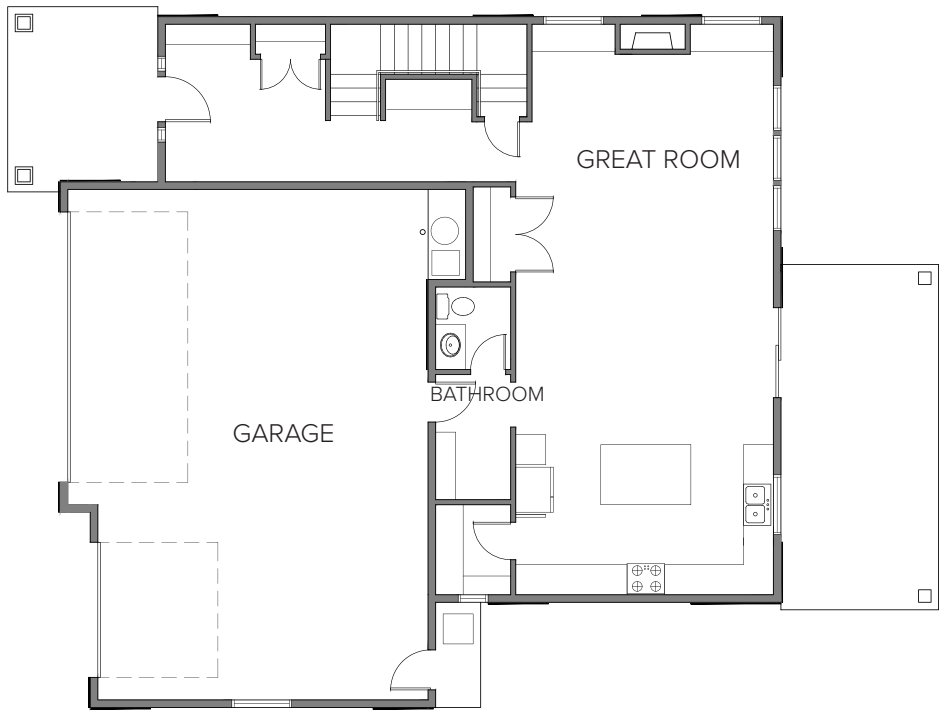


**IRON OAK**  
HOMES

The latest version of Iron Oak's popular floor plan, "Hudson II" expertly blends efficiency with design. The open layout of the Kitchen, Dining, and Great Room are a fan favorite, with plenty of dining space for everyone to enjoy delicious dinners around the table. The kitchen is loaded with cabinets for all those who love to cook! The huge walk-in pantry is a major bonus in this home and the kitchen will satisfy even the pickiest buyers! Counterspace galore, sink looking out over the backyard, luxury appliances, and massive center island are just a few of the best features of this home. With 3 bedrooms + Bonus Room, there is plenty of space to sprawl out and read, watch movies, play games or entertain friends. The low voltage is pre-wired making it easy for homeowners to install their favorite surround sound system. The large covered patio is also pre-wired for speakers and features a gas stub for BBQ – perfect for those summer nights on the patio. Come see this home for yourself in Crescent Lake – Middleton's newest waterfront community! Models are open from noon-5pm on Thursday – Sunday each week.

\*Photos Similar\*

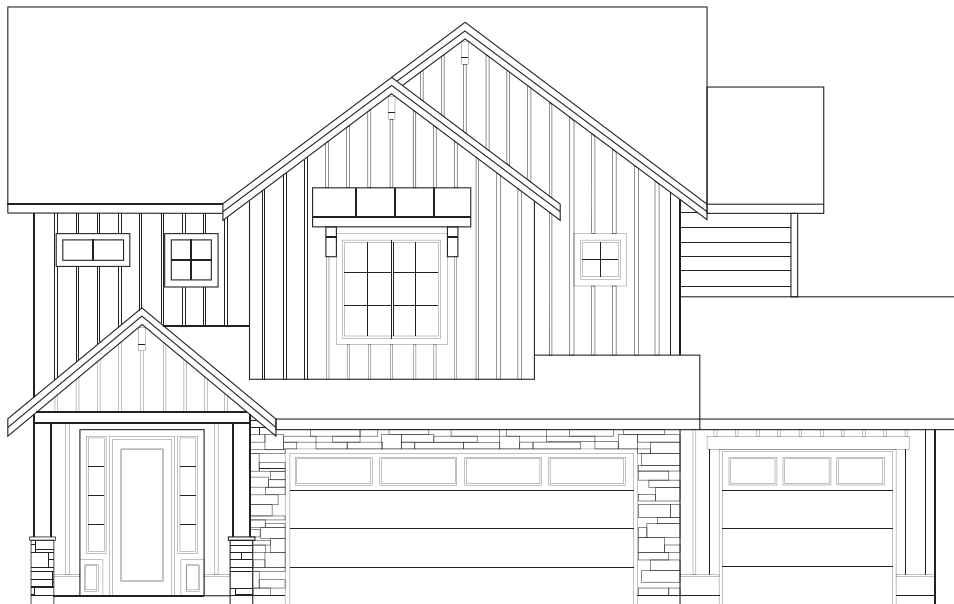




STORY 1



STORY 2



**IRON OAK**  
HOMES

# THE HUDSON II

CRESCENT LAKE

4 BED + BONUS | 2.5 BATH | 3 CAR | 2590 SQFT